

Impact Aid Payments Overview

Fiscal Year 2021
Section 7002 – Federal Property

Table of Contents

- Overview 1
- Arkansas..... 4
- California 4
- Colorado 5
- Florida 5
- Georgia 5
- Illinois 6
- Indiana..... 6
- Iowa 7
- Kansas 7
- Kentucky 8
- Michigan 8
- Missouri 9
- Nebraska 10
- New Jersey..... 10
- New York 11
- North Carolina 11
- North Dakota..... 12
- Ohio..... 12
- Oklahoma 13
- Pennsylvania 14
- South Carolina 14
- South Dakota 15
- Tennessee..... 16
- Texas 16
- Vermont 17
- Virginia..... 17
- Wisconsin 17
- Glossary 18

Overview

About This Publication

In this publication, the National Association of Federally Impacted Schools (NAFIS) catalogs how Impact Aid Section 7002 Federal Property funds for Fiscal Year (FY) 2021 were distributed to federally impacted school districts across the United States and its territories, based on information from the U.S. Department of Education Impact Aid payment database. At the time of writing in June 2023, FY 2021 is the most recent fiscal year that final payments have been made to federally impacted school districts.

The report features a list of school districts, by state, that received payments for Section 7002 Federal Property, as well as their actual payment and the amount they would receive if the program were fully funded. In addition, it lists the number of federally owned and total acres in each school district, as well as the percentage of federal land the district contains. It also notes the congressional district for each school district.

Impact Aid

U.S. public school districts are financed through a combination of state and local revenue. Local funding comes from a combination of business and residential property taxes and fees and local sales tax.

Because federal land is exempt from taxation (as are many of the businesses and facilities located on that land), the land places a financial burden on local school districts and taxpayers.

School districts with federal property—such as military installations, Indian Trust or Treaty lands, federal low-rent housing and national laboratories, national parks and other federal buildings and lands—lose local revenue because of this non-taxable land. Impact Aid is a federal education program that partially reimburses federally impacted school districts—those located on or near federal property—for this loss of locally-derived revenue. It ensures these districts are not at a financial disadvantage and that the students they serve have access to the opportunities they need to meet their full potential.

Impact Aid funding is direct, locally controlled and flexible. It goes directly to school districts, bypassing state involvement, and is used to support all students in the district, just like local tax revenue. It can be used for any general fund purpose, such as instructional materials, teacher salaries, transportation, technology, mental health supports, extracurricular activities and facilities. All decisions on how Impact Aid funds are spent are made locally, allowing great flexibility to ensure funds are targeted wherever needs are greatest.

For FY 2021, Congress appropriated approximately \$1.501 billion for Impact Aid, across five line items:

Section	Appropriations
7002 – Federal Property	\$76.31 million
7003 – Basic Support	\$1.354 billion
7003(d) – Children with Disabilities	\$48.32 million
7007 – Construction	\$17.41 million
7008 – Facilities	\$4.84 million

Note: Appropriations increased in FY 2021

Section 7002 – Federal Property

Federal Property payments reimburse school districts that have lost significant local revenue due to the federal ownership of land within school district boundaries. Examples of eligible federal property include national parks and grasslands, Army Corps of Engineers projects, military testing grounds, national laboratories, military academies and federal dams and reservoirs.

A school district must meet two criteria to be eligible for Section 7002:

- The property was acquired by the Federal Government after 1938, AND
- The assessed value of the property when it was acquired by the Federal Government was at least 10 percent of the school district’s total assessed value

This property cannot have been acquired in exchange for other federal property. In addition, the district must not be substantially compensated by increases in revenues from federal activities from the property, such as timber or mining fees.

School districts must submit an application to the U.S. Department of Education to be considered for a Section 7002 payment each year. The Federal Government uses a **three-step formula to determine the amount of Section 7002 funding that a school district should receive – its full funding payment (also referred to as maximum payment)**. This formula was established in 2013 and is considered less subjective and easier to administer than the one previously used.

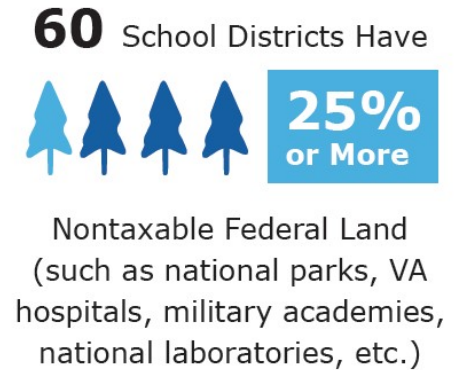
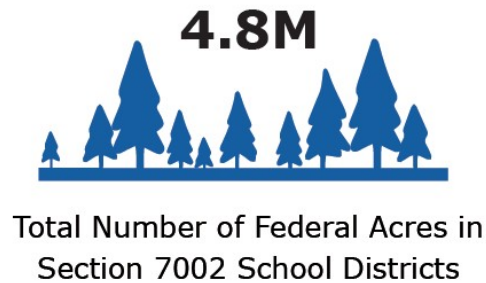
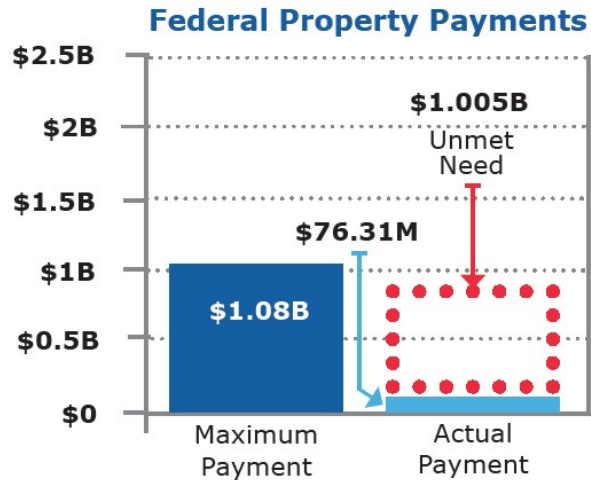
Step 1:	Step 2:	Step 3:
$\frac{\text{Total assessed value of taxable property}}{\text{(Number of total acres – federal acres)}}$	$\frac{\text{Average dollar-per-acre of taxable property}}{\text{X Number of eligible federal acres}}$	$\frac{\text{Value of federal property}}{\text{X Local tax rate}}$
= Average dollar-per-acre of taxable property	= Value of federal property	= Full funding payment

Today, each school district receives a foundation payment based on a percentage of funds that it received under the previous formula. Remaining funds are distributed based on the value of taxable property within school district boundaries and the local tax rate. Because Section 7002 is underfunded, the funding available after foundation payments are made is equally prorated based on each school district’s full funding payment as a percentage of the total program cost.

FY 2021 Section 7002 – Federal Property National Snapshot

For FY 2021, Congress appropriated \$76.31 million for Federal Property payments. Nationwide, 202 school districts applied and were eligible for this funding, with 60 of these school districts containing 25% or more nontaxable federal land. Their calculated full funding payments totaled over \$1 billion.

SECTION 7002 - FEDERAL PROPERTY



Note: This information comes from the U.S. Department of Education and is based on FY 2021 data.

About NAFIS

The National Association of Federally Impacted Schools (NAFIS) represents the 1,100-plus federally impacted public school districts that together educate approximately 10 million students across the nation. Federally impacted school districts are those located on or near nontaxable federal property—including military installations; Indian Trust, Treaty and Alaska Native Claims Settlement Act lands; federal low-rent housing facilities; and national parks, national laboratories and other federal buildings and property. These school districts, which are demographically and geographically diverse, receive Impact Aid, a federal education program that reimburses school districts for the lost local revenue and additional costs associated with the presence of federal property. To learn more, visit www.nafisdc.org.

Arkansas

Impact Aid Fiscal Year 2021 Section 7002 – Federal Property Final Payments

School District	CD	Federal Acres	Total Acres	Percent Federal	FY21 Payment	Full Funding Payment
West Side School District #4	2	26,212.12	122,139.21	21%	\$466,084.00	\$1,124,601.48
TOTAL		26,212.12	122,139.21		\$466,084.00	\$1,124,601.48

California

Impact Aid Fiscal Year 2021 Section 7002 – Federal Property Final Payments

School District	CD	Federal Acres	Total Acres	Percent Federal	FY21 Payment	Full Funding Payment
Alpine County Unified School District	3	22,255.29	475,641.00	5%	\$9,204.00	\$65,833.29
Bolinas-Stinson Union School District	2	12,072.00	26,636.72	45%	\$303,231.00	\$2,632,390.04
Fallbrook Union Elementary School District	48	111,512.00	164,336.00	68%	\$2,785,060.00	\$81,549,027.13
Fallbrook Union High School District	48	111,512.00	176,723.00	63%	\$1,665,678.00	\$46,938,633.76
French Gulch-Whiskeytown El. School Dist.	1	20,905.62	124,600.00	17%	\$47,846.00	\$20,656.23
Hueneme Elementary School District	26	1,550.00	4,955.39	31%	\$183,372.00	\$2,677,706.97
Island Union Elementary School District	20-22	8,000.00	26,215.17	31%	\$2,074.00	\$101,359.76
Lompoc Unified School District	24	57,952.38	192,658.80	30%	\$635,611.00	\$10,361,960.11
Los Alamitos Unified School District	45	5,792.00	12,320.00	47%	\$3,904,718.00	\$45,791,873.03
Oceanside Unified School District	49	25,342.00	42,243.00	60%	\$2,761,817.00	\$108,415,574.32
San Diego Unified School District	50-52	15,060.00	139,535.00	11%	\$5,756,771.00	\$91,057,317.90
Shoreline Unified School District	2	49,332.00	125,135.56	39%	\$1,714,080.00	\$3,267,651.17
Sierra Sands Unified School District	20	49,281.00	620,460.00	8%	\$1,108,695.00	\$930,159.29
Wheatland School District	1	17,692.80	67,200.00	26%	\$11,250.00	\$416,887.35
TOTAL		508,259.09	2,198,659.64		\$20,889,407.00	\$394,227,030.35

Colorado

Impact Aid Fiscal Year 2021 Section 7002 – Federal Property Final Payments

School District	CD	Federal Acres	Total Acres	Percent Federal	FY21 Payment	Full Funding Payment
Academy School District #20	5	17,710.45	81,541.46	22%	\$1,800,943.00	\$22,900,821.72
Adams County School District #14	8	16,465.75	30,394.00	54%	\$3,137,336.00	\$31,095,924.45
TOTAL		34,176.20	111,935.46		\$4,938,279.00	\$53,996,746.17

Florida

Impact Aid Fiscal Year 2021 Section 7002 – Federal Property Final Payments

School District	CD	Federal Acres	Total Acres	Percent Federal	FY21 Payment	Full Funding Payment
Walton County School Board	2	76,289.00	669,440.00	11%	\$303,346.00	\$9,407,656.68
TOTAL		76,289.00	669,440.00		\$303,346.00	\$9,407,656.68

Georgia

Impact Aid Fiscal Year 2021 Section 7002 – Federal Property Final Payments

School District	CD	Federal Acres	Total Acres	Percent Federal	FY21 Payment	Full Funding Payment
Bryan County Board of Education	1	109,050.00	282,752.00	39%	\$832,333.00	\$40,122,644.96
Clay County Board of Education	2	16,604.00	138,873.60	12%	\$143,486.00	\$223,306.76
Liberty County Board of Education	1	123,822.86	267,155.20	46%	\$667,213.00	\$18,031,817.58
Lincoln County Board of Education	12	52,750.00	164,672.00	32%	\$266,710.00	\$2,078,640.34
Long County School System	1	24,615.00	258,233.00	10%	\$38,339.00	\$527,687.41
TOTAL		326,841.86	1,111,685.80		\$1,948,081.00	\$60,984,097.05

Illinois

Impact Aid Fiscal Year 2021 Section 7002 – Federal Property Final Payments

School District	CD	Federal Acres	Total Acres	Percent Federal	FY21 Payment	Full Funding Payment
Cass School District #63	6	1,026.00	2,807.00	37%	\$427,509.00	\$5,471,848.55
Community Consol. School Dist. #180	11	2,408.00	5,043.84	48%	\$774,763.00	\$7,796,026.79
Elwood CCSD #203	14	6,747.37	18,679.68	36%	\$707,426.00	\$1,512,712.92
Ewing-Northern Comm. Co. School Dist. #115	12	15,398.00	56,819.42	27%	\$61,006.00	\$306,683.59
Giant City Community Consolidated	12	5,046.00	25,023.00	20%	\$17,227.00	\$275,159.79
Lemont High School District 210	11	3,608.00	19,840.00	18%	\$920,309.00	\$4,716,775.80
Wilmington Comm. Unit School Dist. #209-U	1	14,876.45	63,509.76	23%	\$2,085,799.00	\$2,997,620.22
TOTAL		49,109.82	191,722.70		\$4,994,039.00	\$23,076,827.66

Indiana

Impact Aid Fiscal Year 2021 Section 7002 – Federal Property Final Payments

School District	CD	Federal Acres	Total Acres	Percent Federal	FY21 Payment	Full Funding Payment
Bartholomew Consolidated School Corp.	6	24,270.00	192,563.64	13%	\$254,194.00	\$3,947,269.64
Loogootee Community School Corporation	8	39,150.00	85,425.80	46%	\$266,880.00	\$1,328,974.70
Madison Consolidated Schools	9	15,770.00	161,805.00	10%	\$76,543.00	\$631,755.58
Perry Central Community School Corp.	8	43,251.00	219,996.00	20%	\$164,490.00	\$574,296.03
South Ripley Community School Corp.	9	28,042.04	134,808.74	21%	\$74,010.00	\$577,487.44
TOTAL		150,483.04	794,599.18		\$836,117.00	\$7,059,783.39

Iowa

Impact Aid Fiscal Year 2021 Section 7002 – Federal Property Final Payments

School District	CD	Federal Acres	Total Acres	Percent Federal	FY21 Payment	Full Funding Payment
Clear Creek-Amana Schools*	1	9,595.62	9,595.62	100%	\$66,146.00	-
Moravia Community School District	3	21,344.00	83,993.00	25%	\$60,941.00	\$300,718.64
Solon Comm. School District	1	6,107.00	56,631.00	11%	\$84,448.00	\$735,877.43
TOTAL		37,046.62	150,219.62		\$211,535.00	\$1,036,596.07

Kansas

Impact Aid Fiscal Year 2021 Section 7002 – Federal Property Final Payments

School District	CD	Federal Acres	Total Acres	Percent Federal	FY21 Payment	Full Funding Payment
Blue Valley Unified School District #384	1	21,156.81	201,032.70	11%	\$82,429.00	\$113,507.19
Burlington Unif. School Dist. #244	2	14,918.43	110,480.07	14%	\$28,899.00	\$122,643.35
Clay Center Unified School Dist. #379	1	16,536.00	374,968.00	4%	\$23,404.00	\$170,974.01
Ell-Saline Unif. School Dist. #307	1	23,302.00	185,907.00	13%	\$30,207.00	\$148,076.50
Eureka Unif. School Dist. #389	4	10,546.00	31,801.90	33%	\$12,757.00	\$78,341.05
Independence Unif. School Dist. #446	2	20,227.00	137,886.00	15%	\$26,320.00	\$7.65
Jefferson West USD 340	1	8,370.00	49,918.08	17%	\$40,573.00	\$269,444.23
Norton Unif. School Dist. #211	1	7,185.00	364,585.57	2%	\$6,443.00	\$30,809.36
Oskaloosa Unif. School Dist. #341	1	12,344.00	63,599.00	19%	\$58,295.00	\$260,083.57
Riley Unified Sch. Dist. 378	1	35,330.00	92,243.00	38%	\$55,655.00	\$1,708,086.49
Thunder Ridge Unif. School Dist. #110	1	13,811.00	92,305.00	15%	\$53,207.00	\$64,287.42
USD 343 Perry Public Schools	1	7,758.00	70,385.39	11%	\$19,567.00	\$134,779.83
Waconda Unif. School Dist. #272	1	23,415.00	157,427.00	15%	\$63,037.00	\$292,443.31
West Franklin Unif. School Dist. #287	3	4,148.00	19,789.01	21%	\$12,185.00	\$40,416.73
TOTAL		219,047.24	1,952,327.72		\$512,978.00	\$3,433,900.69

Kentucky

Impact Aid Fiscal Year 2021 Section 7002 – Federal Property Final Payments

School District	CD	Federal Acres	Total Acres	Percent Federal	FY21 Payment	Full Funding Payment
Edmonson Co. Board of Education	2	45,477.00	140,947.00	32%	\$90,950.00	\$1,157,478.27
Lyon County Schools	1	23,076.51	164,480.00	14%	\$64,048.00	\$426,676.22
Russell Co. Board of Education	1	32,616.98	180,478.00	18%	\$255,678.00	\$676,274.54
Taylor County School District	1	13,436.00	173,422.84	8%	\$59,122.00	\$290,514.98
Trigg County School District	1	76,034.93	307,923.20	25%	\$1,172,757.00	\$1,371,538.50
TOTAL		190,641.42	967,251.04		\$1,642,555.00	\$3,922,482.51

Michigan

Impact Aid Fiscal Year 2021 Section 7002 – Federal Property Final Payments

School District	CD	Federal Acres	Total Acres	Percent Federal	FY21 Payment	Full Funding Payment
Baldwin Comm. Schools*	2	14,884.64	234,096.02	6%	\$119,812.00	-
Big Bay De Noc School Dist.	1	2,042.00	81,063.00	3%	\$18,469.00	\$19,685.18
Ewen-Trout Creek School	1	63,654.00	436,312.23	15%	\$129,122.00	\$205,460.35
Glen Lake Community School	1	24,303.89	94,306.64	26%	\$3,296,436.00	\$4,765,487.12
Leland Public School	1	16,446.08	45,149.25	36%	\$695,503.00	\$3,767,921.22
Wakefield-Marenisco School District	1	27,302.00	368,200.00	7%	\$43,726.00	\$164,402.47
Watersmeet Township School District	1	60,522.00	177,774.00	34%	\$324,464.00	\$1,589,036.84
TOTAL		209,153.97	1,436,901.14		\$4,627,532.00	\$10,511,994.40

Missouri

Impact Aid Fiscal Year 2021 Section 7002 – Federal Property Final Payments

School District	CD	Federal Acres	Total Acres	Percent Federal	FY21 Payment	Full Funding Payment
Bunker R-III School Dist. 090-077	8	11,255.00	147,422.30	8%	\$10,331.00	\$141,437.72
Center 58 School Dist. 048-080**	5	-	-	-	\$266,916.00	-
Chadwick School Dist. R-1	7	26,060.00	88,432.00	29%	\$46,847.00	\$166,925.64
East Carter Co. R-II School Dist. 018-047	8	20,163.48	185,642.25	11%	\$21,674.00	\$86,587.75
Eminence R-I	8	19,170.00	226,422.00	8%	\$32,121.00	\$54,937.65
Fair Play R-II School Dist. 084-002	4	3,367.00	54,887.04	6%	\$4,824.00	\$40,149.64
Greenville R-II School Dist. 111-086	8	55,229.84	288,412.30	19%	\$56,655.00	\$204,521.78
Hermitage R-IV School Dist. 043-004	4	12,251.85	39,587.00	31%	\$16,912.00	\$415,494.56
Lakeland R-III School District	4	31,031.07	120,890.99	26%	\$40,690.00	\$271,161.04
Lesterville R-IV School Dist. 090-078	8	1,746.00	74,114.00	2%	\$1,197.00	\$20,945.70
Osceola School District	4	15,342.00	80,997.00	19%	\$38,811.00	\$204,111.15
Phelps County R-III	8	17,764.61	91,970.96	19%	\$3,363.00	\$99,877.00
Plato R-V School District 107-156	8	22,092.45	143,932.25	15%	\$12,370.00	\$144,989.64
Smithville R-II School Dist. 024-087	6	8,779.00	52,013.29	17%	\$100,630.00	\$1,822,032.69
Southern Reynolds R-II Schools	8	11,490.00	210,908.00	5%	\$12,969.00	\$44,952.91
Stockton R-1 School District	4	25,876.00	197,533.99	13%	\$17,356.00	\$301,533.63
Van Buren R-I School Dist. 018-050	8	29,095.72	208,600.57	14%	\$74,834.00	\$130,865.80
Warsaw R-IX School District 008-107	4	47,913.22	211,625.70	23%	\$156,813.00	\$1,102,646.89
Wheatland R-II School Dist.	4	13,183.40	80,135.34	16%	\$15,855.00	\$174,412.84
Winona R-III School Dist. 101-105	8	61,519.00	115,770.00	53%	\$56,515.00	\$432,014.85
TOTAL		433,329.64	2,619,296.98		\$987,683.00	\$5,859,598.88

Nebraska

Impact Aid Fiscal Year 2021 Section 7002 – Federal Property Final Payments

School District	CD	Federal Acres	Total Acres	Percent Federal	FY21 Payment	Full Funding Payment
Alma Public School	3	21,812.00	102,451.00	21%	\$153,766.00	\$981,056.65
Harvard Public School*	3	8,138.00	60,629.00	13%	\$101,837.00	-
Malcolm Public Schools	1	3,052.43	47,259.68	6%	\$43,234.00	\$225,997.52
Niobrara School District #1-R*	3	4,046.00	118,009.87	3%	\$3,443.00	-
South Central Nebraska Unified School Dist. 5	3	22,053.68	305,024.00	7%	\$257,887.00	\$89,102,325.96
Southern Valley School Dist. #540	3	4,105.00	353,146.34	1%	\$30,360.00	\$85,037.52
TOTAL		63,207.11	986,518.77		\$590,527.00	\$90,394,417.65

New Jersey

Impact Aid Fiscal Year 2021 Section 7002 – Federal Property Final Payments

School District	CD	Federal Acres	Total Acres	Percent Federal	FY21 Payment	Full Funding Payment
Blairstown Township BOE	7	7,501.20	43,580.00	17%	\$37,802.00	\$1,388,338.27
Colts Neck Twp. Board of Education	4	4,970.00	20,299.00	24%	\$698,941.00	\$7,035,676.35
Kittatinny Regional High School District	5	18,837.00	88,839.00	21%	\$404,499.00	\$4,064,436.43
Lakehurst Borough Board of Education*	4	6.60	22.84	29%	\$61,662.00	-
Montague Board of Education	5	2,616.00	26,695.00	10%	\$173,086.00	\$693,826.18
New Hanover Twp. Board of Education	3	8,435.00	16,971.00	50%	\$684,621.00	\$1,847,840.17
Plumsted Twp. Board of Education	4	11,904.50	26,048.00	46%	\$1,059,999.00	\$10,539,647.86
Rockaway Township Board of Education	11	2,930.27	29,383.40	10%	\$389,524.00	\$5,120,244.69
Sandyston-Walpack Consolidated School Dist.	5	18,681.62	42,964.00	43%	\$371,103.000	\$1,682,647.91
TOTAL		75,882.19	294,802.24		\$3,881,237.00	\$32,372,657.86

New York

Impact Aid Fiscal Year 2021 Section 7002 – Federal Property Final Payments

School District	CD	Federal Acres	Total Acres	Percent Federal	FY21 Payment	Full Funding Payment
Highland Falls-Ft. Montgomery Central School District	18	13,857.00	20,190.00	69%	\$3,724,361.00	\$24,355,275.10
Hyde Park Central School District	18	1,086.21	24,719.00	4%	\$368,105.00	\$1,784,801.43
TOTAL		14,943.21	44,909.00		\$4,092,466.00	\$26,140,076.53

North Carolina

Impact Aid Fiscal Year 2021 Section 7002 – Federal Property Final Payments

School District	CD	Federal Acres	Total Acres	Percent Federal	FY21 Payment	Full Funding Payment
Graham County Schools	11	60,237.97	186,915.00	32%	\$425,006.00	\$3,266,275.46
Onslow County Board of Education	3	126,082.59	520,288.00	24%	\$2,402,503.00	\$27,219,701.30
Swain County Board of Education	11	269,895.00	370,130.00	73%	\$628,773.00	\$6,582,264.41
TOTAL		456,215.56	1,077,333.00		\$3,456,282.00	\$37,068,241.17

North Dakota

Impact Aid Fiscal Year 2021 Section 7002 – Federal Property Final Payments

School District	CD	Federal Acres	Total Acres	Percent Federal	FY21 Payment	Full Funding Payment
Beulah Public School Dist. #27	AL	2,201.00	307,381.63	1%	\$1,206.00	\$13,069.17
Garrison School District #51	AL	40,935.00	238,867.28	17%	\$64,100.00	\$327,408.24
Hazen Public School District #3	AL	6,138.79	142,278.60	4%	\$7,855.00	\$34,183.37
Turtle Lake-Mercer School District #72	AL	3,517.00	287,570.80	1%	\$4,089.00	\$10,036.51
Underwood School District #8	AL	26,512.47	131,572.18	20%	\$28,054.00	\$266,400.72
TOTAL		79,304.26	1,107,670.49		\$105,304.00	\$651,098.01

Ohio

Impact Aid Fiscal Year 2021 Section 7002 – Federal Property Final Payments

School District	CD	Federal Acres	Total Acres	Percent Federal	FY21 Payment	Full Funding Payment
Mad River Local School District	10	659.00	6,095.00	11%	\$166,352.00	\$1,234,038.55
Maplewood Local School Dist.	14	8,281.85	51,305.00	16%	\$78,201.00	\$581,941.91
Perkins Local School District	9	8,694.26	25,960.46	33%	\$631,720.00	\$9,093,681.51
Southeast Local School Dist.	7	22,696.43	81,883.15	28%	\$480,532.00	\$3,977,425.55
Windham Exempted Village Schools	14	5,749.84	9,434.88	61%	\$87,336.00	\$2,402,152.31
TOTAL		46,081.38	174,678.49		\$1,444,141.00	\$17,289,239.83

Oklahoma

Impact Aid Fiscal Year 2021 Section 7002 – Federal Property Final Payments

School District	CD	Federal Acres	Total Acres	Percent Federal	FY21 Payment	Full Funding Payment
Arapaho-Butler Public School	3	12,471.00	70,274.80	18%	\$13,207.00	\$27,594.32
Bowring Public School	3	20,689.12	157,885.38	13%	\$10,051.00	\$23,501.89
Braggs School District 51-I046-000	2	36,325.00	48,706.00	75%	\$28,838.00	\$260,993.74
Canadian 61-I002-000	2	15,878.00	65,083.52	24%	\$128,576.00	\$374,705.96
Chelsea School District 66-I003-000	2	7,483.29	102,808.00	7%	\$5,362.00	\$45,932.50
Cleveland School Dist. 59-I006-000	3	14,039.14	88,877.18	16%	\$61,939.00	\$2,098,109.19
Colbert 07-I004-000	2	8,279.00	42,652.24	19%	\$34,817.00	\$164,733.41
Crowder 61-I028-000	2	16,060.00	105,957.12	15%	\$27,604.00	\$64,607.32
Eufaula School Dist. 49-I001-000	2	25,211.00	174,141.36	14%	\$182,323.00	\$306,453.35
Felt School Dist. 13-I010-000	3	13,733.50	220,756.69	6%	\$3,661.00	\$9,258.77
Gore School District 68-I006-000	2	3,956.33	40,610.73	10%	\$5,823.00	\$71,502.18
Haywood School Dist. 61-C088-000	2	7,560.31	60,810.88	12%	\$2,899.00	\$18,165.86
Hulbert Public School 11-I016-000	2	9,945.00	54,070.00	18%	\$7,457.00	\$115,857.16
Keota School District 31-I043-000	2	19,564.00	86,493.25	23%	\$18,336.00	\$41,168.96
Keys School	2	18,868.00	113,852.00	17%	\$25,141.00	\$244,102.23
Kildare School	3	6,428.00	63,693.00	10%	\$7,785.00	\$30,764.11
Kingston 45-I003-000	2	38,585.31	108,320.00	36%	\$508,953.00	\$8,836,311.88
Little Axe School District 14-I070	4	3,319.00	28,614.00	12%	\$5,556.00	\$106,617.01
Locust Grove 46-I017-000	2	14,720.00	78,580.70	19%	\$15,394.00	\$273,504.23
Mannford Public Schools 19-I003-000	3	13,528.00	49,584.00	27%	\$57,941.00	\$498,238.05
Marietta 43-I016-000	4	7,269.97	76,521.00	10%	\$4,457.00	\$87,573.13
Ravia School District 35-C010-000	2	4,897.00	28,068.85	17%	\$7,556.00	\$29,722.25
Shidler 57-I011-000	2	14,171.00	259,765.00	5%	\$23,902.00	\$49,471.29
Silo School District 07-I001-000	2	17,429.00	77,440.00	23%	\$183,770.00	\$631,977.20
Skiatook 72-I007-000	1	6,449.16	38,492.83	17%	\$50,074.00	\$510,452.75
Snyder 38-I004-000	3	7,193.00	221,079.00	3%	\$7,248.00	\$14,918.86
Stidham School District 49-C016-000	2	10,752.00	42,919.38	25%	\$8,491.00	\$25,683.88
Stringtown School District 03-I007-000	2	14,045.00	112,440.00	12%	\$12,341.00	\$21,266.36
Tahlequah 11-I035-000	2	32,013.47	78,549.00	41%	\$197,639.00	\$2,509,428.43
Thackerville Public Schools	4	4,527.79	38,441.00	12%	\$9,761.00	\$173,474.78
Tishomingo 35-I020-000	2	23,749.00	141,905.06	17%	\$92,677.00	\$146,506.50
Tuskahoma Public School*	2	16,539.83	16,539.83	100%	\$16,169.00	-
Vian School District 68-I002-000	3	11,811.00	85,374.05	14%	\$11,869.00	\$136,749.56
Wister School District 40-I049-000	2	6,469.00	31,873.00	20%	\$6,470.00	\$80,133.00
TOTAL		483,959.22	3,011,178.85		\$1,784,087.00	\$18,029,480.11

Pennsylvania

Impact Aid Fiscal Year 2021 Section 7002 – Federal Property Final Payments

School District	CD	Federal Acres	Total Acres	Percent Federal	FY21 Payment	Full Funding Payment
Chambersburg Area School District	13	15,832.00	161,203.20	10%	\$483,641.00	\$9,139,629.53
Delaware Valley School Dist.	8	7,633.00	125,797.33	6%	\$735,362.00	\$3,280,384.95
East Stroudsburg Area School District	8	11,385.92	137,864.28	8%	\$606,869.00	\$9,229,291.61
Hatboro Horsham School Dist.	1	1,063.95	11,995.00	9%	\$708,425.00	\$7,590,926.87
Warren County School District	15	8,507.00	578,314.00	1%	\$127,749.00	\$378,945.95
TOTAL		44,421.87	1,015,173.81		\$2,662,046.00	\$29,619,178.91

South Carolina

Impact Aid Fiscal Year 2021 Section 7002 – Federal Property Final Payments

School District	CD	Federal Acres	Total Acres	Percent Federal	FY21 Payment	Full Funding Payment
Anderson Co. School Dist. #4	3	14,247.00	67,608.00	21%	\$244,865.00	\$4,078,330.54
TOTAL		14,247.00	67,608.00		\$244,865.00	\$4,078,330.54

South Dakota

Impact Aid Fiscal Year 2021 Section 7002 – Federal Property Final Payments

School District	CD	Federal Acres	Total Acres	Percent Federal	FY21 Payment	Full Funding Payment
Andes Central School District 11-1	AL	10,312.14	130,821.24	8%	\$201,103.00	\$119,328.80
Bison School Dist. #52-1	AL	21,288.99	854,111.86	2%	\$17,910.00	\$29,162.79
Bon Homme School District #4-2	AL	11,749.51	201,923.85	6%	\$301,062.00	\$119,545.34
Burke School Dist. #26-2	AL	7,501.00	224,297.43	3%	\$3,241.00	\$34,870.36
Chamberlain Independent School District #1	AL	20,407.91	594,270.68	3%	\$121,610.00	\$106,540.78
Custer School District 16-1	AL	17,973.17	772,901.85	2%	\$673,977.00	\$142,651.24
Hill City School Distirct	AL	11,600.65	373,637.77	3%	\$441,031.00	\$128,049.43
Hot Springs School District 23-2	AL	13,799.63	378,303.99	4%	\$92,071.00	\$112,571.27
Kadoka Area School District 35-2	AL	42,448.00	1,323,943.55	3%	\$19,004.00	\$43,439.67
Lemmon School Dist. #52-4	AL	91,516.32	1,053,394.94	9%	\$65,999.00	\$137,877.15
Lyman Independent School District #42-1	AL	8,209.07	779,005.59	1%	\$4,935.00	\$12,765.60
Mobridge-Pollock School District #62-6	AL	17,209.00	170,333.49	10%	\$83,124.00	\$188,566.28
Oelrichs Public Schools #23-3	AL	34,275.43	360,136.03	10%	\$101,717.00	\$29,219.85
Pierre School Dist. #32-2	AL	14,378.00	227,653.23	6%	\$266,734.00	\$513,367.06
Platte-Geddes School District #11-5	AL	22,002.00	404,230.52	5%	\$76,397.00	\$128,740.84
South Central School District #26-5	AL	16,813.00	202,413.62	8%	\$1,259.00	\$68,128.39
Stanley Co. School Dist. #57-1	AL	92,451.00	970,986.85	10%	\$402,621.00	\$284,009.30
Wall School District #51-5	AL	46,079.00	843,400.43	5%	\$602,075.00	\$51,263.88
Yankton School Dist. #63-3	AL	2,409.00	138,484.00	2%	\$46,117.00	\$157,643.77
TOTAL		502,422.82	10,004,250.92		\$3,521,987.00	\$2,407,741.80

Tennessee

Impact Aid Fiscal Year 2021 Section 7002 – Federal Property Final Payments

School District	CD	Federal Acres	Total Acres	Percent Federal	FY21 Payment	Full Funding Payment
Clay County Schools	6	27,878.00	66,000.00	42%	\$120,272.00	\$3,473,615.59
DeKalb County Board of Education	6	38,062.00	210,560.00	18%	\$162,566.00	\$622,959.05
Pickett County Board of Education	6	17,973.00	112,047.50	16%	\$48,915.00	\$117,474.44
Stewart County Board of Education	7	137,238.13	321,888.00	43%	\$193,922.00	\$666,361.00
Unicoi County Board of Education	1	51,398.95	119,355.52	43%	\$204,937.00	\$1,729,957.56
TOTAL		272,550.08	829,851.02		\$730,612.00	\$6,610,367.64

Texas

Impact Aid Fiscal Year 2021 Section 7002 – Federal Property Final Payments

School District	CD	Federal Acres	Total Acres	Percent Federal	FY21 Payment	Full Funding Payment
Broadus Independent School Dist.	1	31,409.00	133,568.00	24%	\$200,731.00	\$2,046,610.37
Brookeland Independent School Dist.	1	29,231.00	103,680.00	28%	\$1,372,452.00	\$893,259.57
Etoile Independent School Dist.	17	14,565.00	46,191.02	32%	\$48,107.00	\$285,403.36
Farmersville Independent School Dist.	3	10,293.00	54,101.70	19%	\$105,933.00	\$1,551,821.29
Gatesville Independent School District	31	65,441.00	311,203.00	21%	\$134,936.00	\$2,056,672.15
Granger Independent School Dist.	31	10,766.00	64,119.00	17%	\$41,362.00	\$334,977.35
Kopperl Independent School Dist.	31	15,849.00	73,246.00	22%	\$36,535.00	\$481,080.56
Lake Dallas Independent School Dist.	26	2,879.56	10,674.00	27%	\$453,258.00	\$9,226,235.28
Lewisville Independent School Dist.	26	17,663.82	79,255.00	22%	\$3,616,659.00	\$107,731,995.10
Liberty-Eylau Independent School Dist.	1	9,626.10	44,165.42	22%	\$109,725.00	\$1,358,905.99
Little Elm Independent School Dist.	26	9,913.00	25,059.00	40%	\$822,127.00	\$36,489,480.76
Pilot Point Independent School District	26	21,495.00	77,421.00	28%	\$186,748.00	\$3,323,736.32
Pottsboro Independent School Dist.	4	21,599.00	61,700.00	35%	\$532,238.00	\$5,555,909.37
Princeton Independent School Dist.	3	13,161.00	40,040.16	33%	\$337,965.00	\$8,038,591.52
Redwater Independent School District	1	28,004.42	55,914.02	50%	\$301,909.00	\$2,746,613.72
Texline Independent School Dist.	13	46,625.00	392,280.00	12%	\$43,423.00	\$300,765.54
Wylie Independent School District	3	3,511.00	25,831.06	14%	\$206,916.00	\$10,860,766.84
TOTAL		352,031.90	1,598,448.38		\$8,551,024.00	\$193,282,825.09

Vermont

Impact Aid Fiscal Year 2021 Section 7002 – Federal Property Final Payments

School District	CD	Federal Acres	Total Acres	Percent Federal	FY21 Payment	Full Funding Payment
Southwest Vrmont Union Elem. School Dist.	AL	25,270.00	104,621.41	24%	\$117,693.00	\$7,271,648.22
Taconic and Green Regional School District	AL	18,332.00	102,749.00	18%	\$193,109.00	\$6,500,005.26
TOTAL		43,602.00	207,370.41		\$310,802.00	\$13,771,653.48

Virginia

Impact Aid Fiscal Year 2021 Section 7002 – Federal Property Final Payments

School District	CD	Federal Acres	Total Acres	Percent Federal	FY21 Payment	Full Funding Payment
Craig Co. School Board	9	35,939.28	210,899.20	17%	\$52,420.00	\$620,914.07
York County School Board	1	25,522.58	68,355.00	37%	\$2,418,957.00	\$33,767,136.92
TOTAL		61,461.86	279,254.20		\$2,471,377.00	\$34,388,050.99

Wisconsin

Impact Aid Fiscal Year 2021 Section 7002 – Federal Property Final Payments

School District	CD	Federal Acres	Total Acres	Percent Federal	FY21 Payment	Full Funding Payment
Crandon School District	7	9,661.67	326,877.86	3%	\$34,596.00	\$240,135.25
Laona Jt. School Dist. #1	7	8,283.00	154,048.00	5%	\$30,110.00	\$113,443.14
School District Of Florence County	7	13,225.90	312,231.08	4%	\$43,800.00	\$274,407.40
TOTAL		31,170.57	793,156.94		\$108,506.00	\$627,985.79

Glossary

CD: Congressional District

Federal Acres: Total eligible federally-owned acres in a school district

FY21 Payment: District's actual FY21 Federal Property payment

Full Funding Payment: District's FY21 payment if program were fully funded – also referred to as “maximum payment”

Percent Federal: Percent of a school district’s total acres that is eligible federal land

School District: Used here to mean local educational agency (LEA) – a board of education or other legally constituted local school authority having administrative control and direction of free public education in a county, township, independent school district or other school district, including any state agency that operates and maintains facilities for providing a free public education

Total Acres: Total acres in a school district

***** : Denotes a school district that selected the “Opt-Out” option on their Section 7002 Impact Aid application and chose to only receive their foundation payment, forgoing their final payment

****** : Denotes a school district that lost Section 7002 eligibility due to land sale in FY 2020 – school district received FY 2021 funding under the definition of federal property (7013(5)(C)(iii))