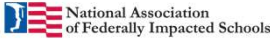


# Talking Points

**Jon Bernstein**  
President, Bernstein Strategy Group



1

# Talking Points

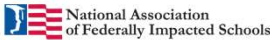
- Appropriations
- Advancing Toward Impact Aid Full Funding
- Infrastructure
- Impact Aid Coalitions

2

# FY22 & FY23 Appropriations

- Final FY22 Bill:
  - \$55M increase for Basic Support
  - \$1M increase for Federal Property
- NAFIS requests a \$57 M increase for FY23
  - \$55 M for Basic Support
  - \$2 M for Federal Property

Section	FY20 Final	FY21 Final	FY22 Final
Federal Property	\$75.31 M	\$76.31 M	\$77.31 M
Basic Support	\$1,340.24 M	\$1,354.24 M	\$1,409.24 M
Disabilities	\$48.32 M	\$48.32 M	\$48.32 M
Construction	\$17.41 M	\$17.41 M	\$17.41 M
Facilities	\$4.84 M	\$4.84 M	\$4.84 M
<b>Total</b>	<b>\$1,486.11 M</b>	<b>\$1,501.11 M</b>	<b>\$1,557.11 M</b>



3

# FY22 & FY23 Appropriations Requests

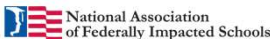
- THANK them for their support in helping secure the FY 2022 funding increase
- REQUEST support for a \$57 million increase for Impact Aid in FY 2023
  - \$2 million increase for Federal Property would help cover the cost of new school districts and help provide a payment in lieu of taxes that recognizes the increase in assessed value of taxable land
  - \$55 million increase for Basic Support (notwithstanding the increase in the FY 2023 Local Contribution Rate) will help ensure the purchasing power of the increases of the past years
- EXPLAIN what an increase to Impact Aid could mean to your district



4

# Advancing Toward Impact Aid Full Funding

- *Advancing Toward Impact Aid Full Funding Act* (H.R. 5255) introduced in the House in September
  - Led by Representative Levin (D-CA-49) and Young (R-AK-AL)
  - Total of 33 co-sponsors
- Calls for substantial increases in Impact Aid to get closer to full funding
  - Five-year glidepath
  - Full funding for Basic Support
  - Proportional increase for Federal Property
  - Increases CWD payment to \$2000 per student (\$1000 for off-base military students)
- Senate companion bill will soon be introduced
  - Led by Senators Lujan (D-NM), Inhofe (R-OK), Gillibrand (D-NY), and Tillis (R-NC)
  - Will include an additional \$3.25 M annual increase for construction



5

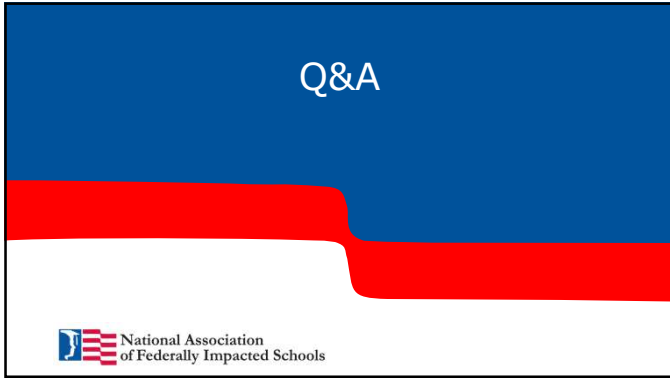
# Advancing Toward Impact Aid Full Funding Requests

- House: THANK those members who have co-sponsored the bill already
  - REQUEST members who have not yet signed on to co-sponsor the bill do so
- Senate: CO-SPONSOR the companion bill (introduced soon!)



6





13



14