

## Policy & Advocacy

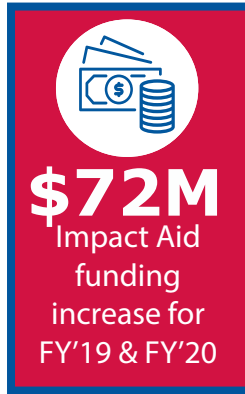
### 2 NEW HIRES



Director,  
Policy & Advocacy  
Leslie Finnan



Assistant,  
Policy & Advocacy  
Nicole Jarvis



Spearheaded introduction of the House Impact Aid Infrastructure Act

- Drafted legislation
- Secured bipartisan sponsors
- 18 national organizations signed letter of support

**43** SENATORS **91** REPRESENTATIVES

HOLD MEMBERSHIP IN IMPACT AID COALITIONS  
• Secured new bipartisan coalition co-chair



Blocked Impact Aid Voucher Bill

Hill briefings, webinars, surveys, Action Alerts and FRO meeting to educate Congressional staff and NAFIS members



**43** SENATORS **97** REPRESENTATIVES

SIGNED LETTERS IN SUPPORT OF IMPACT AID FUNDING

## Communications

### New & Improved NAFIS Resources:



- Impact Aid Payments Overview
- New Member Welcome Packet
- "Is Your School District Eligible?"

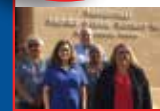
**11,499**  
NAFIS  
Website Visitors

**25**  
NAFIS  
Press Releases

**4**  
IMPACT  
Newsletters

**47**  
NAFIS  
Newsletters

**12**  
Site  
Visits



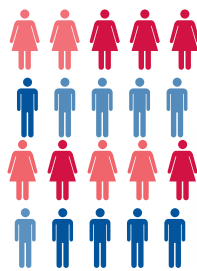
**1474**  
FOLLOWERS  
(up ~7.7%)



**554**  
FOLLOWERS  
(up ~13.3%)

 /NAFISschools

 @NAFISschools  
#ImpactAid



**2** NATIONAL  
CONFERENCES

**334**  
SPRING  
ATTENDEES

**395**  
FALL  
ATTENDEES

**421**  
SCHOOL  
DISTRICT  
MEMBERS

## NAFIS STAFF

**Hilary Goldmann,**  
Executive Director

**Leslie Finnan,**  
Director, Policy & Advocacy

**Nicole Jarvis,**  
Assistant, Policy & Advocacy

**Anne O'Brien,**  
Director, Communications

**Lynn Watkins,**  
Director, Operations & Conference Services

 Federally Impacted Schools  
Educational Foundation

**\$15,320** Total Grant  
Dollars Awarded!

**22 Good Idea Grant**  
Applications Received

**1,025 Students Impacted**  
Directly by Good Idea Grants

**7**

FISEF  
Workshops  
Held

**179 School District  
Leaders**

Strengthened Skills at  
FISEF Workshops

NAFIS/FISEF  
Board of Directors

**Chad Blotsky** - President  
**Tom Schneider** - Vice President  
**Keith Mispagel** - Secretary  
**Ray Proctor** - Treasurer

**Brian Gallup** - School Board Liaison  
**James Sarruda** - Past President

**At-Large Directors**  
• **Craig Hutcheson**  
• **Quincy Natay**  
• **Voyd St. Pierre**  
• **Rosemarie Kraeger**

**Regional Directors**  
• **Will Hardin**  
• **Trista Hedderman**  
• **Jeff Limore**  
• **Keith Mispagel**  
• **Helen Payne**  
• **Wendell Waukau**

