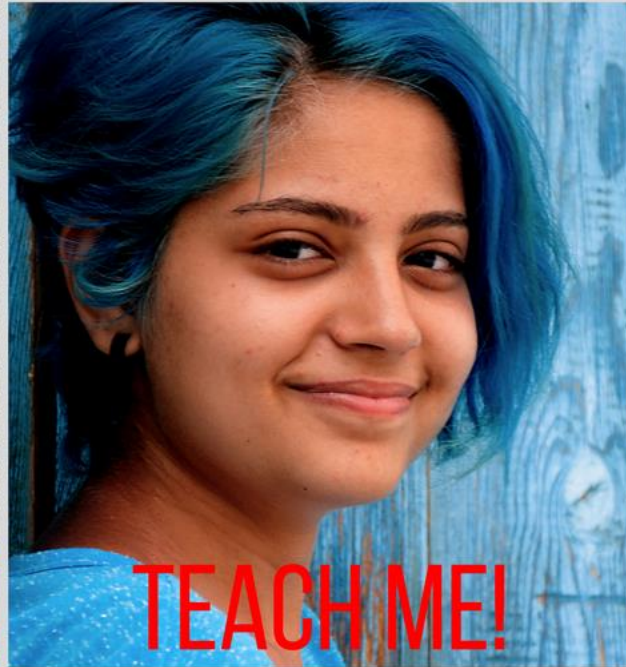
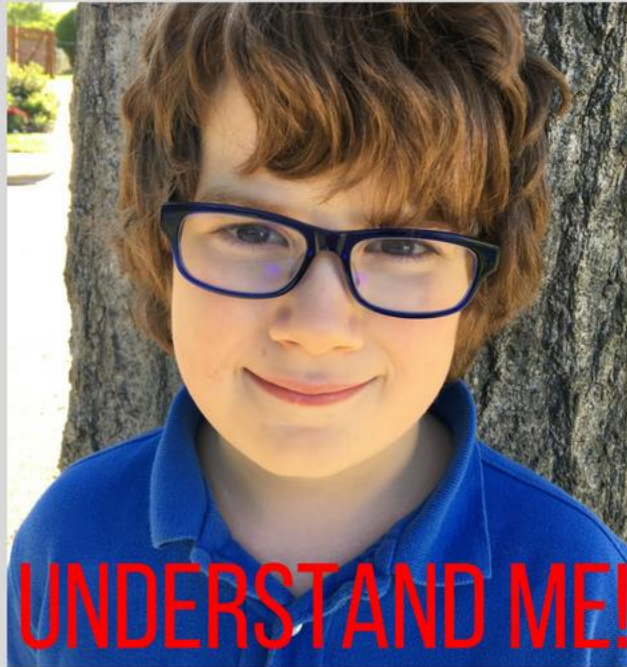


National Association of Federally Impacted Schools





Vision



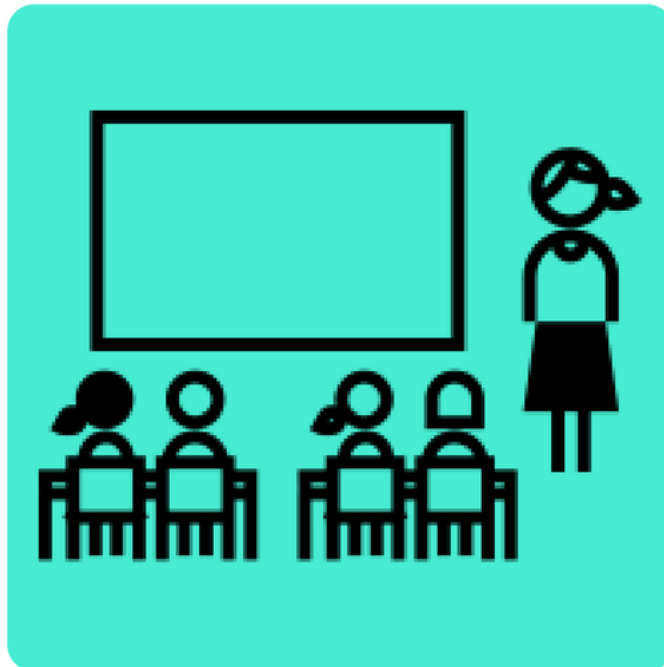
Giftedness and high potential are FULLY RECOGNIZED, UNIVERSALLY VALUED, and ACTIVELY NURTURED to support children from all backgrounds in reaching for their personal best and contributing to their communities.

How We
Do It!

NAGC supports those who help gifted children reach for their personal best.



Parents



Teachers



Academics

Education

Advocacy





Community Building

Research





Minds

Increase the public's urgency to support the needs of gifted and talented children.

Policies



Advocate for the adoption of policies that promote programs and services in which gifted and talented children will thrive.

Practices



Empower supporters to implement effective practices for all gifted and talented children in homes, schools, and communities.

A woman in a graduation cap and gown, looking upwards with a determined expression, her right fist raised in a gesture of protest or solidarity. The image is in a warm, golden-brown color palette.

CREATE A SUPPORTIVE ENVIRONMENT

CHANGE POLICIES

FOR GIFTED LEARNERS



"The frontier in education has moved from Washington, D.C., to the state capitols, districts, and school communities. This doesn't mean that the federal government has no role. We still need it to promote equity by funding schools and protecting the civil rights of all children."



CONFIGURE

ADAPT

CUSTOMIZE



SEE ME!

Addressing
disproportionality
through
equitable identification.



Equitable Identification

Ensures school districts have policies and procedures in place that:

- Allow for the appropriate identification, referral, and placement of gifted children;
- Are benchmarked against local norms; and
- Increase fairness and inclusion while keeping standards high.



TEACH ME!

Measuring learning
through
accountability systems
that **monitor progress**.

Accountability

Ensures that schools and school districts are held accountable for children who are gifted and talented.

**WHO IS
ACCOUNTABLE**





Comprehensive State Support

Creates a comprehensive system of supports for school districts to support children who are gifted and talented.



CHALLENGE ME!

Stimulating learning and
development through
acceleration.

Acceleration

Ensures that school districts have policies in place to allow for students to access content and grade-based acceleration with advanced content, skills, or understanding before a student's expected age or grade level.





UNDERSTAND ME!

Helping educators understand the nature and learning needs of gifted learners through effective **professional learning** and **preparation**.

Professional Development

Ensures that school districts have policies and procedures to allow for professional development that is evidence-based, comprehensive, sustained, and intensive to support gifted and talented students.





Remember to have fun.
We're all in this together!

